

# SN (NAMUR) Series

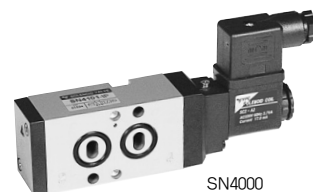
5/2, 5/3 Solenoid, Pneumatic Valve

## CHAPTER 07

- SN3000
- SN4000



SN3000  
Body Width-23mm  
Thread-1/4

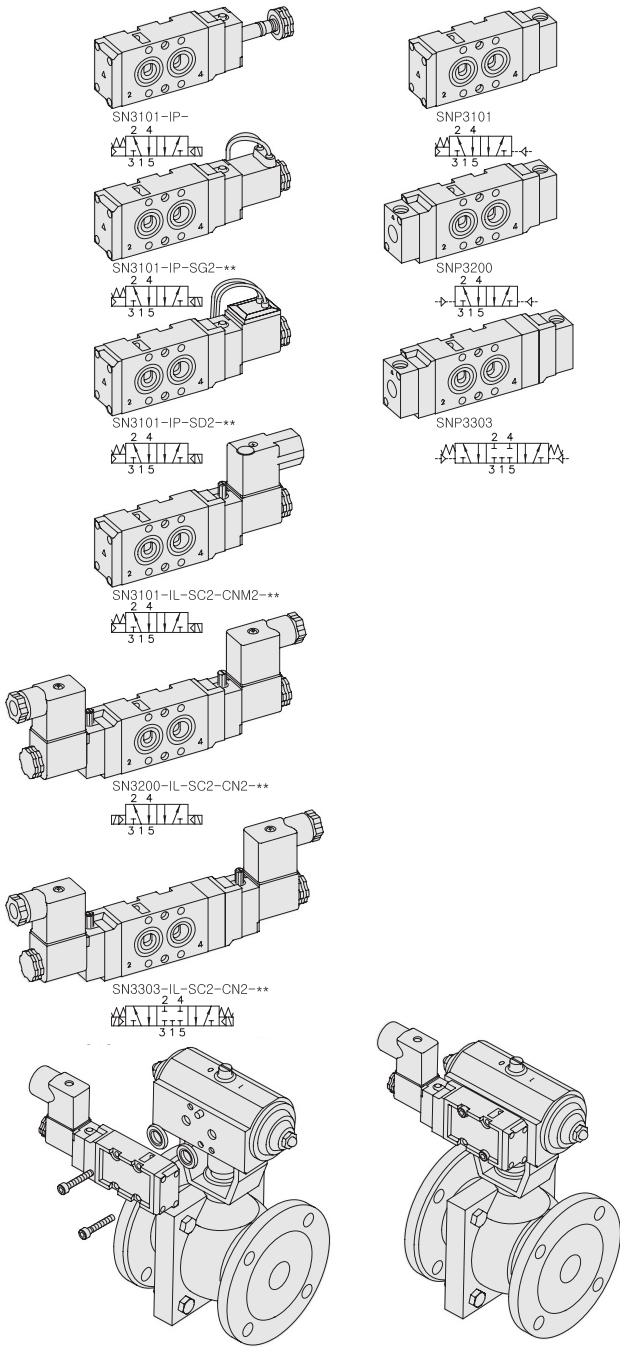


SN4000  
Body Width-30mm  
Thread-1/4

# SN3000. 1/4

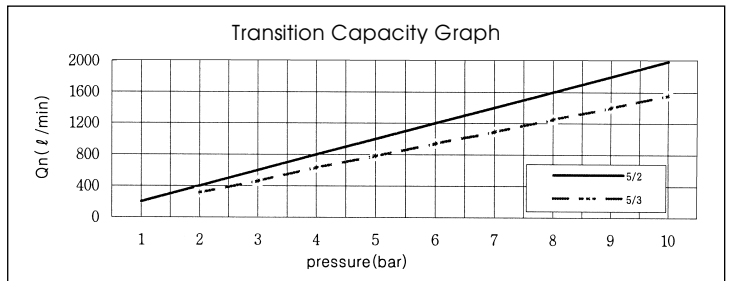
NAMUR Interface  
Solenoid / Pneumatic Valves

- 5/2, 5/3 -1/4
- 23mm Body Width
- Transition Flow 1000ℓ/min (5bar)

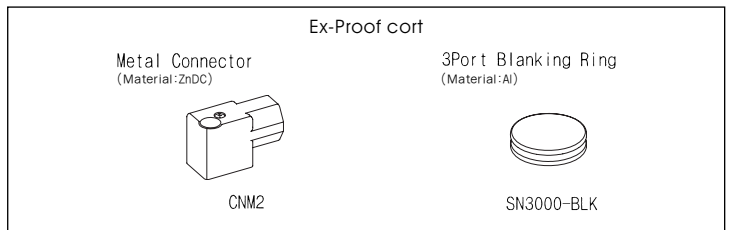


## SPECIFICATION

ITEM	SERIES	SOLENOID, PNEUMATIC	
		5 Port 2 Position	5 Port 3 Position
Fluids		Compressed Air & Inert Gases	
Pressure(bar)		1.5~10.0	2.0~10.0
Eff. Sectional Area(mm <sup>2</sup> )-5bar		18.0	12.0
Ambient & Fluid Temp.		5~60°C (41~140°F)	
Response Time(5bar)		30ms or Less	40ms or Less
Max. Working Frequency		5c/sec	3c/sec
Lubrication		Not Required(Use ISO VG32 #)	
Manual Override		Push Button(Standard), Lever Lock(Option)	
Coil Insulation Class		F-Class or Equivalent	
Permissible Voltage Variation		±10% of Rated Voltage	
Off Min. Residual Voltage		AC:20% or Less / DC:10% or Less	
Power Consumption		Holding-AC:5.5VA(60Hz) / DC:2.5W	



- ### The Material of Parts
- Valve Body : Die-Cast Aluminium
  - Spool : Aluminium
  - Seals : NBR
  - Spring : Stainless
  - Cap : Zinc Pressure Die-Cast
  - Pilot Parts : Glass Filled Nylon
  - Armature : Stainless Steel
  - Armature Seals : Viton

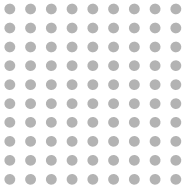


\* The specification on each item can be amended without any prenotice to improve a performance.  
\* The specification on each item can be different from actual specification.

## ORDERING NO.

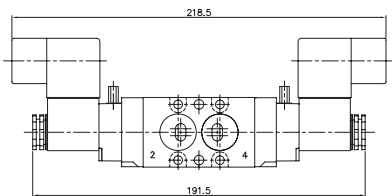
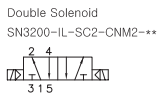
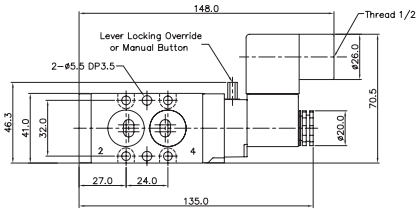
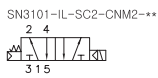
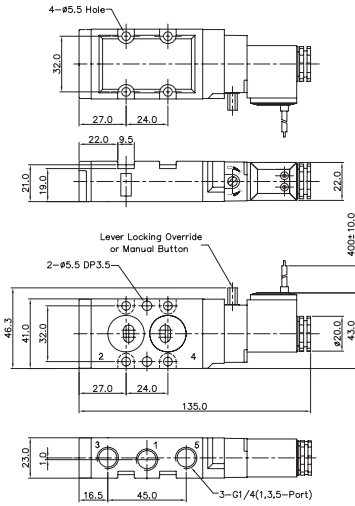
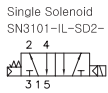
**SN3 1 0 1 - I P - SC2 - CN2 - A2**

Valve Series	Function	Port Size & Thread	Return Method	Int/Ext. Pilot	Manual Operator	Solenoid Coil Type	Connector Type	Voltage
SN3 : Solenoid Valve	1 5/2 Single	0 G 1/4	0 None	I Internal Pilot	O None	O None	O None	O None
	2 5/2 Double	1 NPT 1/4	1 Air + Spring		P Push	SC2 3 Pin Connector Coil	CN2 Normal Connector	A2 AC 220V
	3 5/3 Closed Center		2 Air		Non-Locking	SG2 Grommet/Flying Leads	CD2 Connector With LED	A1 AC 110V
	4 5/3 Open Center		3 Spring		L Lever Locking	SD2 Grommet/Flying Leads With LED	C22 Connector With LED & Surge Suppressor	A4 AC 24V D4 DC 24V
SNP3 : Pneumatic Valve	5 5/3 Pressure Center						CNM2 Metal Connector	D2 DC 12V
							CDM2 Metal Connector With LED	
							C2M2 Metal Connector With LED & Surge Suppressor	

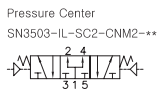
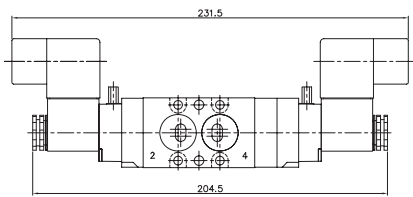
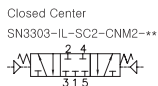


# Solenoid & Pilot Actuated Spool Valves

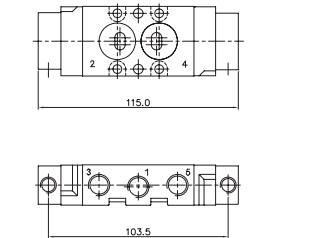
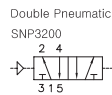
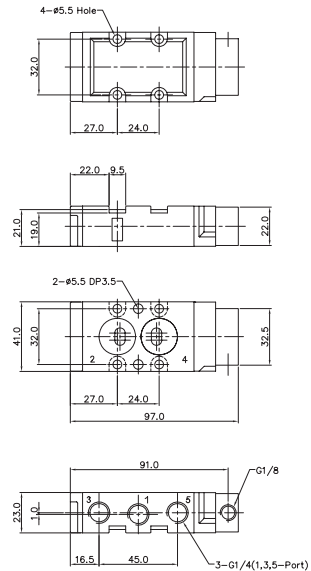
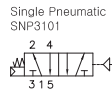
## 5Port 2Position Solenoid Valve



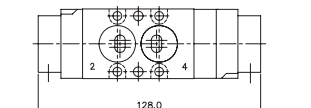
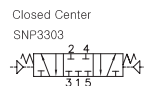
## 5Port 3Position Solenoid Valve



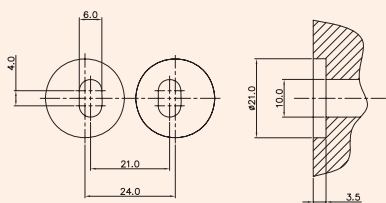
## 5Port 2Position Pneumatic Valve



## 5Port 3Position Pneumatic Valve

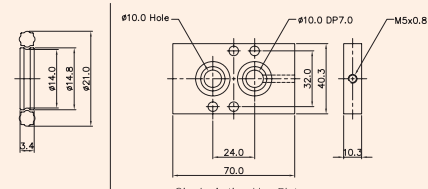


## Sealing Part Dimension



Sealing Area

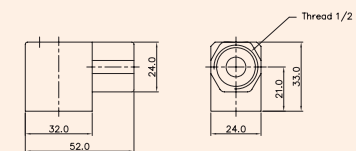
## 3-Port Blanking Part (Material : Al)



SN3000-BLK

SN3000-Plate

## Metal Connector (Material : ZnDC)

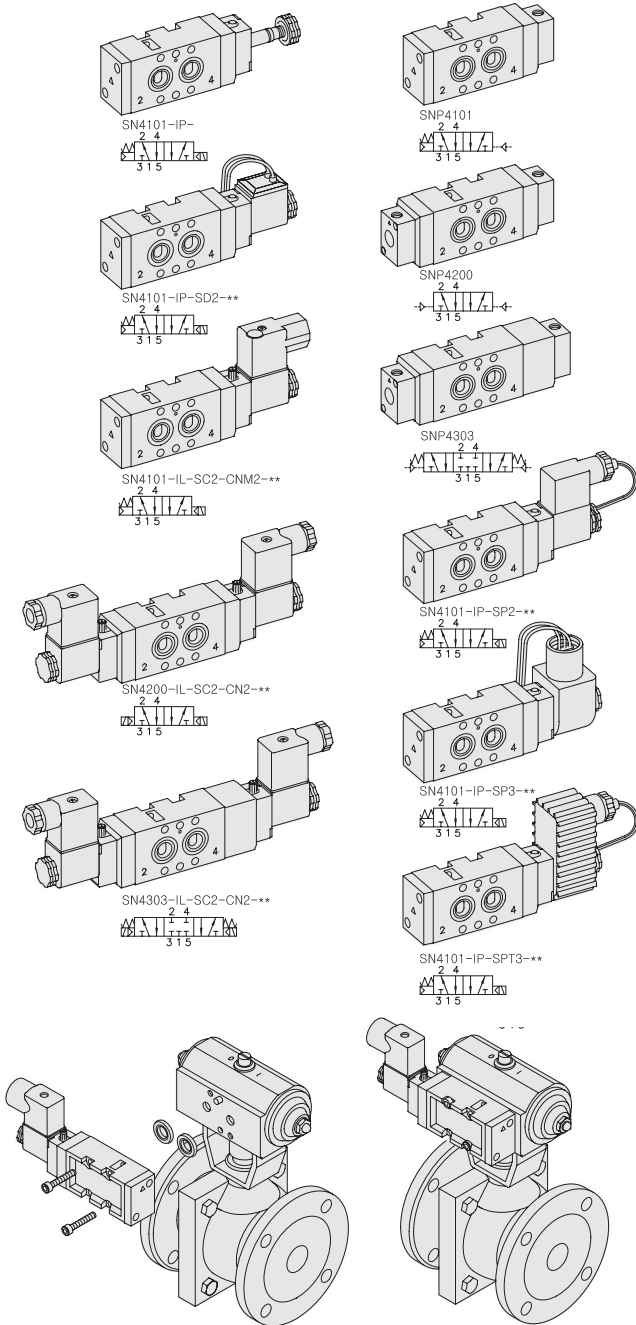


CNM2

# SN4000. 1/4

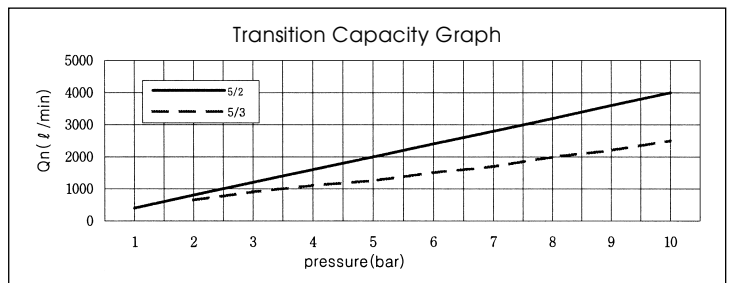
NAMUR Interface  
Solenoid / Pneumatic Valves

- 5/2, 5/3-1/4
- 30mm Body Width
- Transition Flow 1800ℓ/min (5bar)

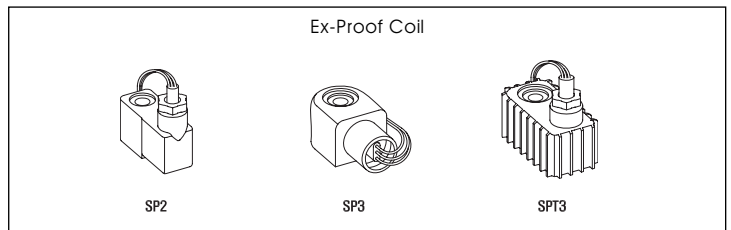


## SPECIFICATION

ITEM	SERIES	SOLENOID, PNEUMATIC	
		5 Port 2 Position	5 Port 3 Position
Fluids		Compressed Air & Inert Gases	
Pressure(bar)		1.5~10.0	2.0~10.0
Eff. Sectional Area(mm <sup>2</sup> )-5bar		32.0	16.0
Ambient & Fluid Temp.		5~60°C (41~140°F)	
Response Time(5bar)		30ms or Less	40ms or Less
Max. Working Frequency		5c/sec	3c/sec
Lubrication		Not Required(Use ISO VG32 #)	
Manual Override		Push Button(Standard), Lever Lock(Option)	
Coil Insulation Class		F-Class or Equivalent	
Permissible Voltage Variation		±10% of Rated Voltage	
Off Min. Residual Voltage		AC:20% or Less / DC:10% or Less	
Power Consumption		Holding-AC:5.5VA(60Hz) / DC:2.5W	



- ### The Material of Parts
- Valve Body : Die-Cast Aluminium
  - Spool : Aluminium
  - Seals : NBR
  - Spring : Stainless
  - Cap : Zinc Pressure Die-Cast
  - Pilot Parts : Glass Filled Nylon
  - Armature : Stainless Steel
  - Armature Seals : Viton

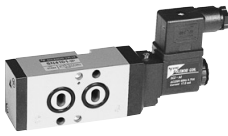
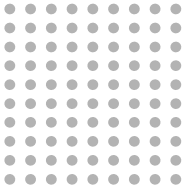


\* The specification on each item can be amended without any prenotice to improve a performance.  
\* The specification on each item can be different from actual specification.

## ORDERING NO.

**SN4 1 0 1 - I P - SC2 - CN2 - A2**

Valve Series	Function	Port Size & Thread	Return Method	Int/Ext. Pilot	Manual Operator	Solenoid Coil Type	Connector Type	Voltage
SN4 : Solenoid Valve	1 5/2 Single	0 G 1/4	0 None	I Internal Pilot	0 None	0 None	0 None	0 None
	2 5/2 Double	1 NPT 1/4	1 Air + Spring		P Push	SC2 3 Pin Connector Coil	CN2 Normal Connector	A2 AC 220V
	3 5/3 Closed Center		2 Air		Non-Locking	SG2 Grommet/Flying Leads	CD2 Connector With LED	A1 AC 110V
	4 5/3 Open Center		3 Spring		L Lever Locking	SD2 Grommet/Flying Leads With LED	CZ2 Connector With LED & Surge Suppressor	A4 AC 24V
SNP4 : Pneumatic Valve	5 5/3 Pressure Center					CNM2 Metal Connector	D4 DC 24V	D2 DC 12V
						SP2 22mm 방폭코일	CDM2 Metal Connector With LED	
						SP3 36mm 방폭코일	CZM2 Metal Connector With LED & Surge Suppressor	
						SPT3 36mm 방폭코일		



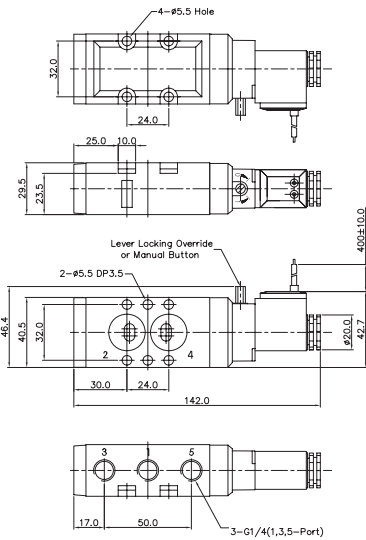
**Namur**  
**Port Thread 1/4**

# Solenoid & Pilot Actuated Spool Valves

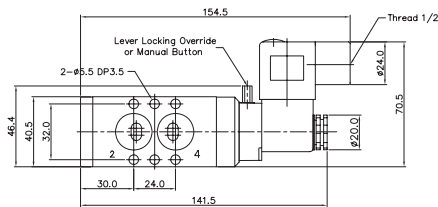
## 5Port 2Position Solenoid Valve

Single Solenoid

SN4101-IL-SD2-

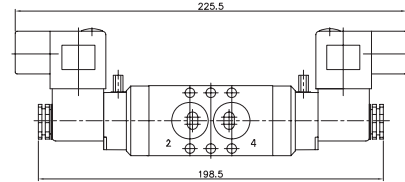
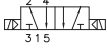


SN4101-IL-SC2-CNM2-\*



Double Solenoid

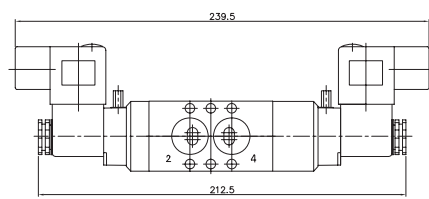
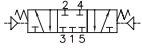
SN4200-IL-SC2-CNM2-\*



## 5Port 3Position Solenoid Valve

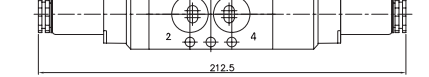
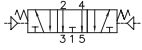
Closed Center

SN4303-IL-SC2-CNM2-\*



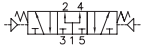
Exhaust Center

SN4403-IL-SC2-CNM2-\*



Pressure Center

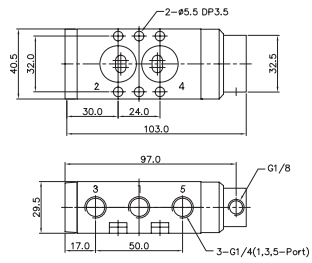
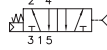
SN4503-IL-SC2-CNM2-\*



## 5Port 2Position & 3Position Pneumatic Valve

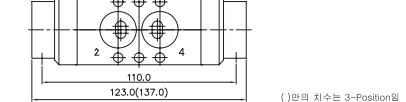
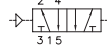
Single Pneumatic

SNP4101



Double Pneumatic

SNP4200

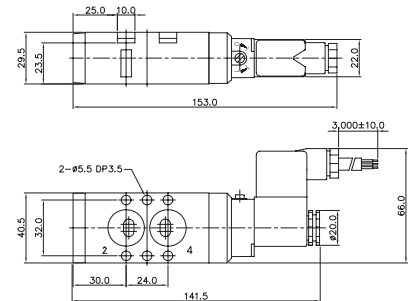
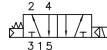


( ) 안의 치수는 3-Position임

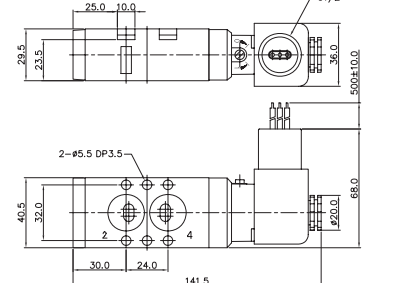
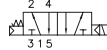
## 5Port 2Position Ex-proof Solenoid Valve

Single Solenoid

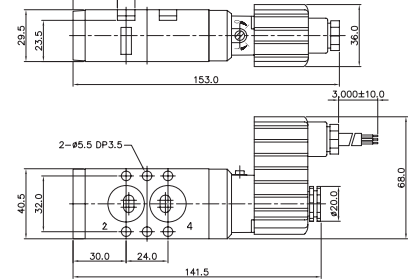
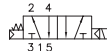
SN4101-IP-SP2-\*\*\*



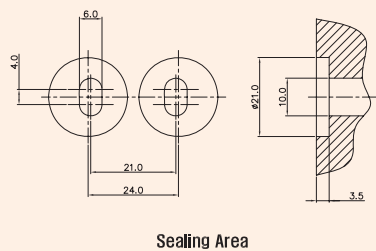
SN4101-IP-SP3-\*\*\*



SN4101-IP-SPT3-\*\*\*

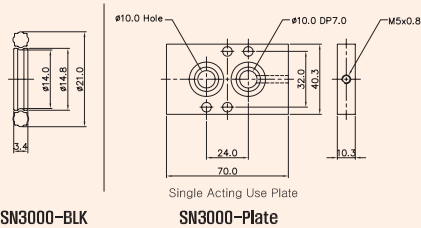


## Sealing Part Dimension



Sealing Area

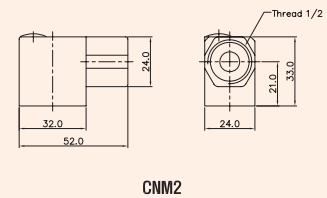
## 3-Port Blanking Part (Material : AI)



SN3000-BLK

SN3000-Plate  
Single Acting Use Plate

## Metal Connector (Material : ZnDC)



CNM2

# Solenoid Coil Series CHAPTER 08

- A Wide Range of Option
- Various Voltage Specification
- 15mm Coil Width
- 22mm Coil Width



SC1-\*\*-  
IP65(With Connector)



SC2-\*\*-  
IP65(With Connector)



SG1-\*\*-  
IP65



SG2-\*\*-  
IP65



SD1-\*\*-  
IP42  
Indicator : LED



SD2-\*\*-  
IP42  
Indicator : LED



SL1-\*\*-  
IP42  
Indicator : LED



SM1-\*\*-  
IP42  
Indicator : LED

\*\* : Voltage Selection

## SPECIFICATION

ITEM	FUNCTION	SOLENOID COIL		
		SC1	SC2	
Voltage Tolerances		±10% of Rated Voltage		
Coil Insulation Class		F-Class or Equivalent		
Temperature Range		5~60°C (41~140°F)		
Holding Power	AC	60Hz	3.5VA	5.5VA
		50Hz	4.5VA	6.5VA
	DC	2.5W	2.5W	

### The Material of Parts

- Molding : Glass Pressure Nylon
- Lead Wire : AWC-no.22, no.24
- Lead Wire Packing : Viton
- Yoke : Carbon Iron
- Indicator Cap : Polycarbonate

\* The specification on each item can be amended without any prenotice to improve a performance.  
\* The specification on each item can be different from actual specification.

## ORDERING NO.

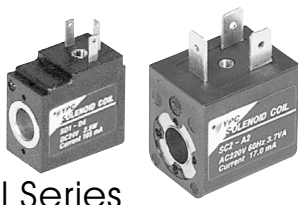
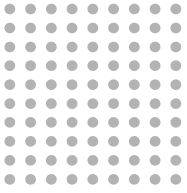
SC1 - A2

### Solenoid Coil Type

SC1	15mm-3 Pin Connector Coil
SG1	15mm-Grommet/Flying Leads
SD1	15mm-Grommet/Flying Leads With LED
SL1	15mm-90 Degree Plug-in Wire Assembly LED
SM1	15mm-180 Degree Plug-in Wire Assembly LED
SC2	22mm-3 Pin Connector Coil
SG2	22mm-Grommet/Flying Leads
SD2	22mm-Grommet/Flying Leads With LED

### Voltage

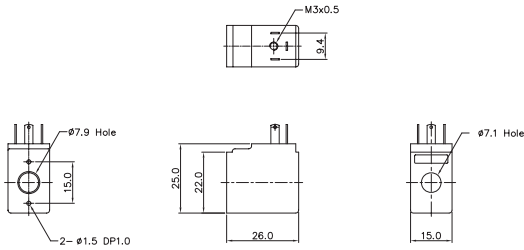
A2	AC 220V
A1	AC 110V
A4	AC 24V
D4	DC 24V
D2	DC 12V



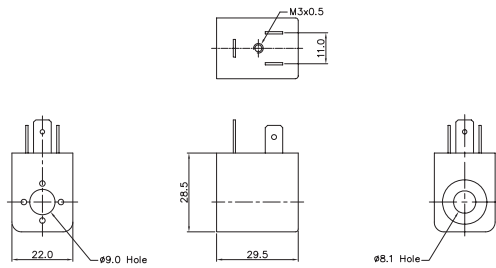
# Solenoid Coil Series

# 15mm Width / 22mm Width

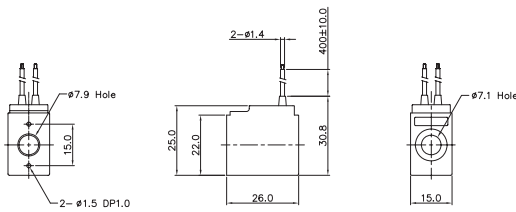
**SC1-\*\***  
(3Pin Connector Coil)



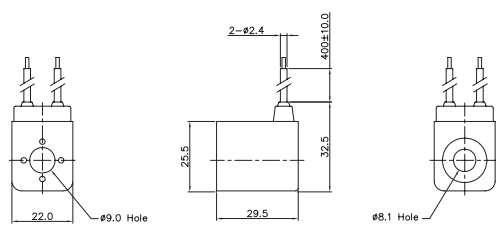
**SC2-\*\***  
(3Pin Connector Coil)



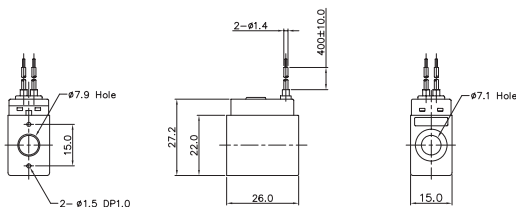
**SG1-\*\***  
(Grommet/Flying Leads)



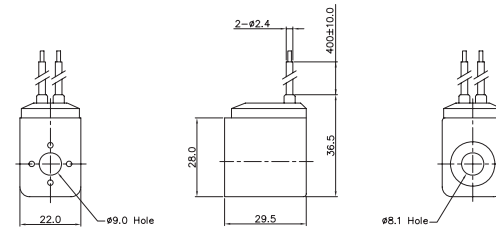
**SG2-\*\***  
(Grommet/Flying Leads)



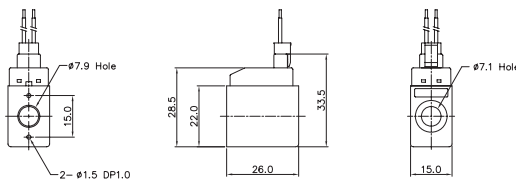
**SD1-\*\***  
(180 Degree Plug-in Wire Assembly LED)



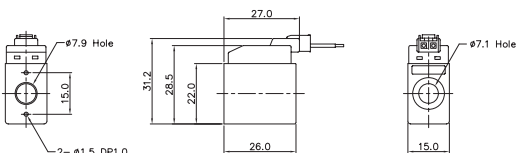
**SD2-\*\***  
(Grommet/Flying Leads With LED)

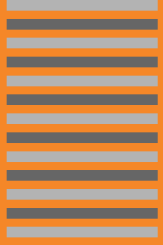


**SL1-\*\***  
(90 Degree Plug-in Wire Assembly LED)



**SM1-\*\***  
(180 Degree Plug-in Wire Assembly LED)





# DIN Connector Series

- A Wide Range of Option
- Various Voltage Specification
- 15mm Coil Width
- 22mm Coil Width

## SPECIFICATION

ITEM	FUNCTION	Connector	
		CN1	CN2
Voltage Tolerances		±10% of Rated Voltage	
Temperature Range		5~60°C (41~140°F)	
Max. Current		2.5A	
Protection Class		IP65(With Coil)	
Section Conductance		Max. 0.75mΩ	Max. 1.50mΩ

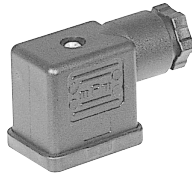
### The Material of Parts

- Indicator : Glass Pressure Nylon, Polycarbonate
- Sealing Packing : NBR
- Jointing Bolt : Carbon Iron

※ The specification on each item can be amended without any prenotice to improve a performance.  
 ※ The specification on each item can be different from actual specification.



CN1



CN2



CD1-\*\*-



CD2-\*\*-



CZ1-\*\*-



CZ2-\*\*-



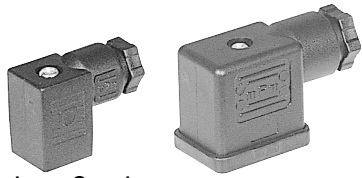
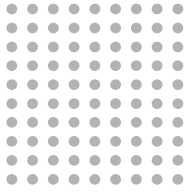
\*\* : Voltage Selection

## ORDERING NO.

# CD1 - A2

Connector Type	
CN1	15mm-3 Pin Normal Connector
CD1	15mm-3 Pin Connector With LED
CZ1	15mm-3 Pin Connector With LED & Surge Suppressor
CN2	22mm-3 Pin Normal Connector
CD2	22mm-3 Pin Connector With LED
CZ2	22mm-3 Pin Connector With LED & Surge Suppressor
CNM2	24mm-3 Pin Metal Normal Connector
CDM2	24mm-3 Pin Metal Connector With LED
CZM2	24mm-3 Pin Metal Connector With LED & Surge Suppressor

Voltage	
A2	AC 220V
A1	AC 110V
A4	AC 24V
D4	DC 24V
D2	DC 12V



# DIN Connector Series

# 15mm Width / 22mm Width

**CN1**

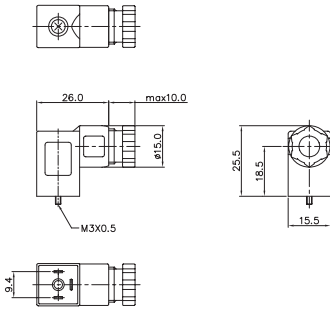
(Normal Connector)

**CD1-\*\***

(Connector With Connector)

**CZ1-\*\***

(Connector With Connector & Surge Suppressor)

**CN2**

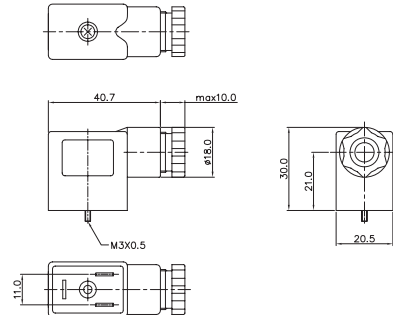
(Normal Connector)

**CD2-\*\***

(Connector With Connector)

**CZ2-\*\***

(Connector With Connector & Surge Suppressor)

**CNM2**

Metal Connector

**CDM2-\*\***

Metal Connector With LED

**CZM2-\*\***

Metal Connector With LED & Surge Suppressor

